

Dusk to Dawn Series



Applications:

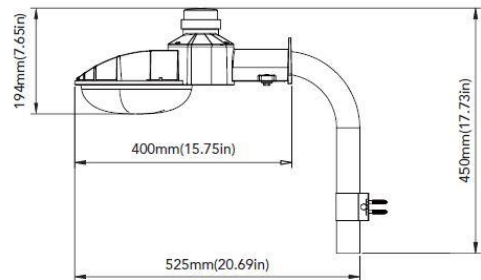
- ✓ Interior shipping/receiving or exterior security use for barns, farms, small parking lots, service roads, walkways, backyards, and perimeter lighting

Features:

- ✓ Maximum light output for safety, security, and general lighting
- ✓ Daylight white light color (5,000K)
- ✓ Rated for damp and wet locations
- ✓ Weatherproof die-cast aluminum housing with polyester powder coat finish in Dark Bronze (standard) or Silver Gray
- ✓ Polycarbonate optical lens
- ✓ UL Listed and DLC Qualified
- ✓ 50,000 hour rated Life Span
- ✓ Voltage: 120V - 277V
- ✓ 72 CRI
- ✓ PF ≥ 0.9
- ✓ Wall or steel powder coated arm mount
- ✓ Warranty: 5 year limited
- ✓ Options: steel powder coated arm mount

Product Offers:

Model #	Power Consumption	Light Output	Efficacy	Replaces
M-DtD-45	45W	4,927Lm	110 lpw	100W PSMH
M-DtD-70	70W	7,000Lm	111 lpw	175W PSMH



Eos Illumination
7111 Dixie Highway
Ste 333
Clarkston, MI 48348
Phone 248-558-3050
EosIllumination.com

Eos Illumination - North
817 E State St.
Ste 102
Cheboygan, MI 49721